



[www.besconsultants.net](http://www.besconsultants.net)

# Existing Building Facade - Rectification & Replacements

Before



After



## **Project Details :**

Project : RCP Building 1, Navi Mumbai

Client : Reliance Industries

Status: Completed

## **BES Scope of Services :**

Facade and cladding Inspections, site water testing, Repair methods, recommendations and monitor rectifications works.

Including replacement of main roof skylight (42 M diameter) with a new system while keeping existing supporting steel structure.

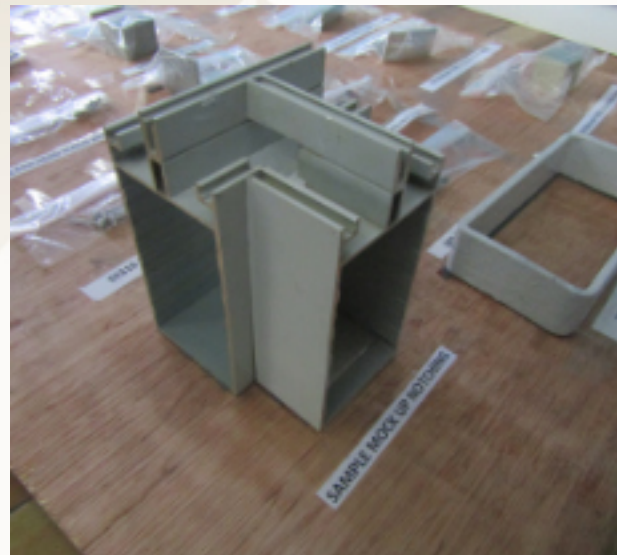
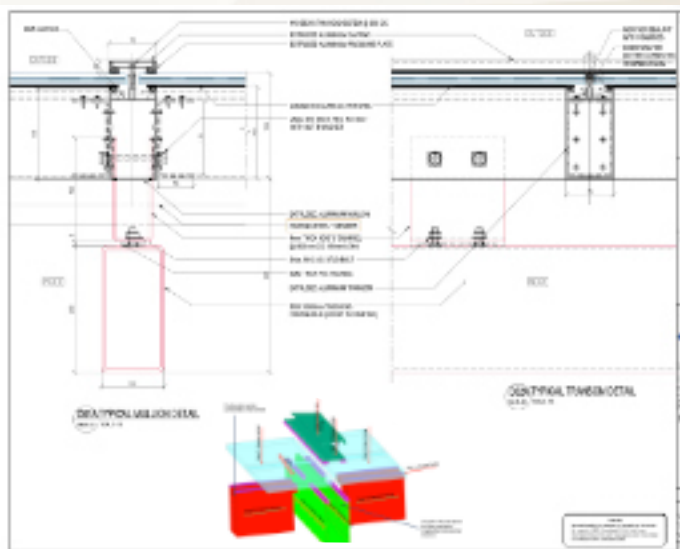


[www.besconsultants.net](http://www.besconsultants.net)

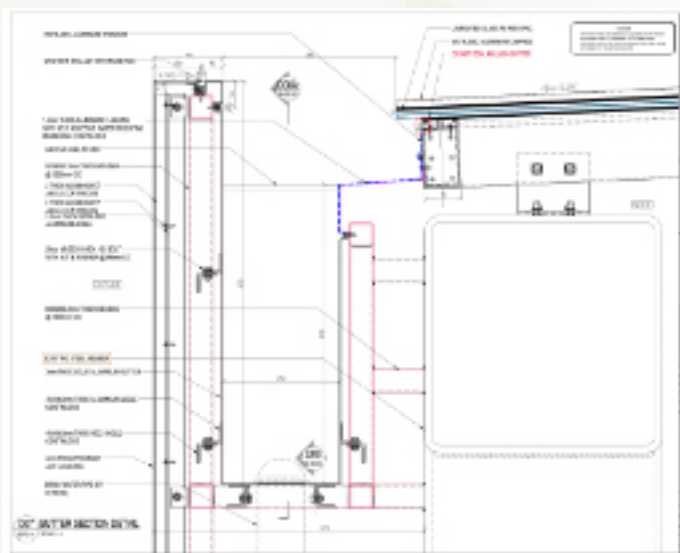
# Existing Building Facade - Rectification & Replacements

Corporate building of G+5 sty, serviced more than 15 years period, experience with performance issues and maintenances. BES has been appointed by Reliance to inspect existing facades and design solutions to replace a large roof skylight of approx. 42 M diameter

## Facade Details and Interfaces system - Designed by BES



In addition to inspections and designs, BES team has played a key role in quality checking with site role, to demonstrate rectifications are carried out with high-quality works. After replacements and rectifications, BES has verified that facades and skylights have not experienced water leakages, and occupants' feedback was satisfactory after refurbished. This is testimony for the quality of BES works



### Key Challenges are

- Verification of Existing skylight steel structure, serviced approx. 15 years.
- BES team has carried out structural verifications as per site conditions.
- Replacement methods of roof skylight which requires lesser disruptions to occupants
- Design of large size peripheral gutter and good drainage systems.
- Deeply involved with the site implementations and help the team

### BES Value Add

- Experiences with existing site challenges and design a practical solutions to suit conditions.
- Experiences with large projects and resolving complex interfaces, helped the project completion with high quality.
- Development of detailed designs and verified existing steel structure capacity to replace new skylight system.
- Practical and site friendly remedial measures developed with good knowledge on site conditions.
- Guide the site team and offer expertise on installation and completion as per drawings, site checking and testing.

[More Details..](#)